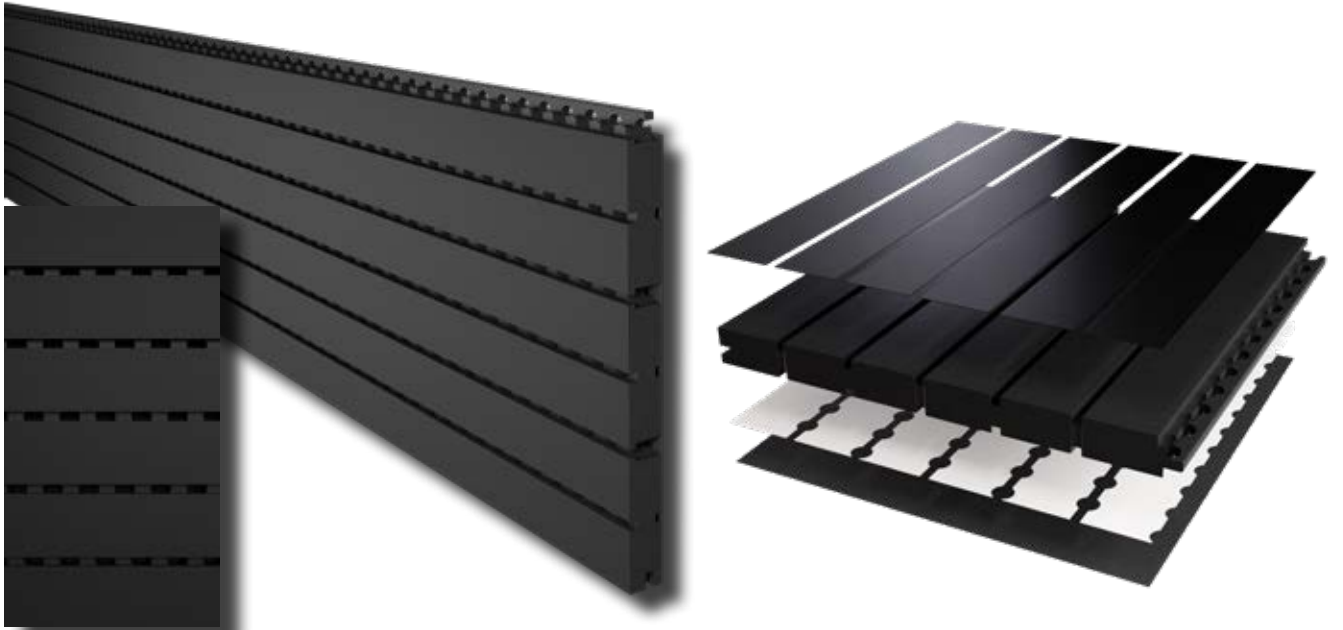


slimline 32/4

PRODUCT ILLUSTRATION

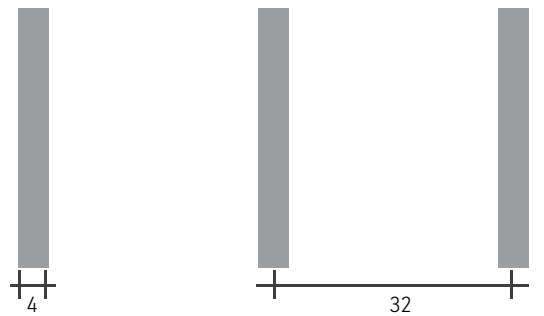


surfaces:



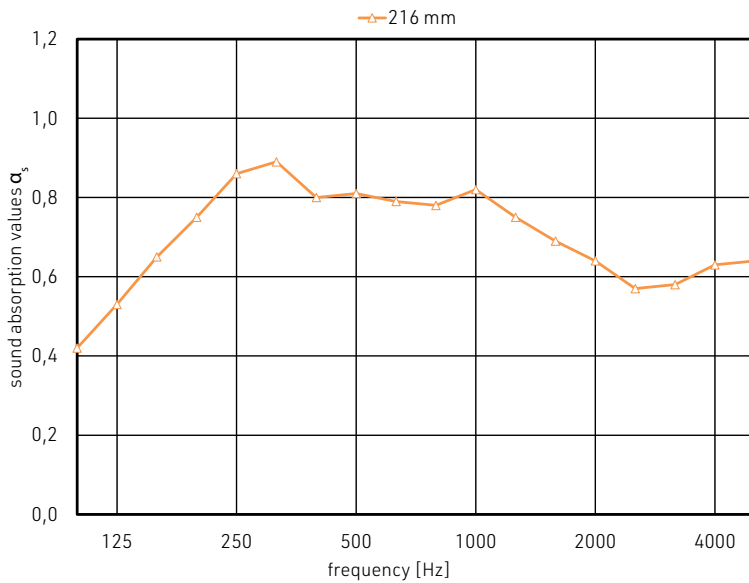
PRODUCT DETAILS

**panel size:** 2.784 x 192 mm  
**slotting:** 32/4  
**core board:** 16 mm  
 MDF B2  
 black  
 drilled  
**surface:** real wood veneer | melamine  
**backing:** backing-layer (technical)  
 acoustic fleece (black)  
**edges:** longitudinal : tounge and groove system  
 transverse: industrial saw cut  
**mounting:** vertical | horizontal  
 wall | ceiling

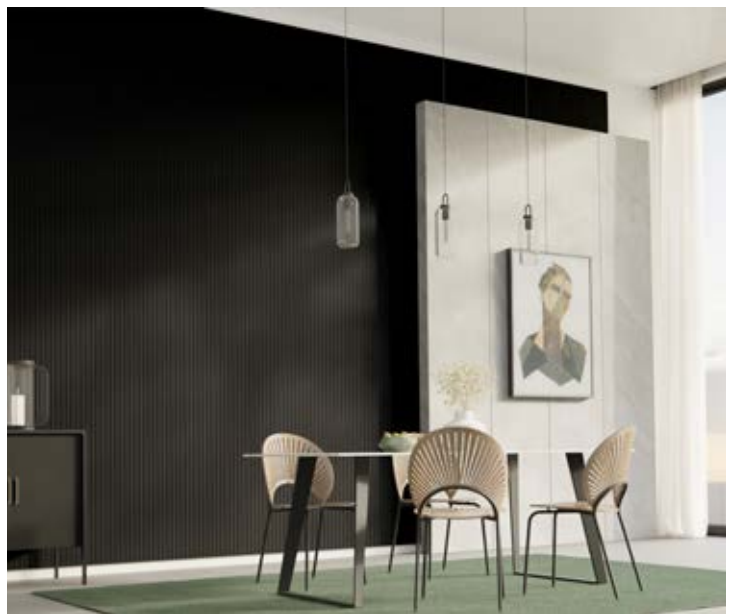


slot width: 4 mm  
 slot center to center: 32 mm

## SOUND ABSORPTION VALUES 32/4



<b>overall build-up</b>	<b>216 mm</b>
cavity (open)	150 mm
PET-fleece	50 mm
panel thickness	16 mm
<b>frequency [Hz]</b>	<b><math>\alpha_s</math></b>
100	0.42
125	0.53
160	0.65
200	0.75
250	0.86
315	0.89
400	0.80
500	0.81
630	0.79
800	0.78
1000	0.82
1250	0.75
1600	0.69
2000	0.64
2500	0.57
3150	0.58
4000	0.63
5000	0.64
<b><math>\alpha_w</math></b>	<b>0.70</b>
<b>absorption class</b>	<b>C</b>



**PRELIMINARY NOTE:**

This data sheet was created to the best of our knowledge and belief. No liability can be assumed for printing and standard errors or mistakes. Further (product) development may result in changes to the available data. Therefore, the content of this data sheet cannot serve as a legally binding basis.